

Hosner-Workshop Material and Equipment Information (3 pages)



Truman Hosner's Pastel Box

Art materials are as personal to an artist as the make of a musical instrument is to a musician.

Please use this list as a reference only, choose the brands you are most comfortable with.

You will find all the materials on the internet by brand or through your favorite art supply store.

I use the same pastels (see above) for figurative and landscape works. Like the keys on a piano, they are always in the same place in my pastel box. I group by color and value range (lighter to darker).

Pastels List:

1. Please bring at least 150 colors – The brands I use are **Rembrandt, Sennelier, Unison, Ludwig**, and a few **Nu- Pastel**
2. Please Include these Key Colors, as best as you are able to: **Sennelier:** 045, 484, 483, 482, 480, 479 / **Rembrandt:** 411.3, 409.3, .5, .7, 538.3, 235.2, 408.3 / **Ludwig:** V100, V520, N120, R170, R242, R 590

Paper/Panel - See Page 2 Images:

3. We work 16x20 or 12x16 – bring your paper as pre-mounted sanded panels - See page 2
4. I use **Lux Archival** - 140 lb/300 gsm white sanded paper or **Pastel Premier White** - 600 Grit
5. I mount the paper onto adhesive gator board panels which I purchase from:
Artgrafix - <http://www.artgrafix.net/gator.htm>
6. Bring a backing board (1/4" Masonite or Particle Board) 2" all-around larger than your paper + metal clips and screws (hardware store) to clip your panel to the backing board - See page 2

Miscellaneous:

7. Large Kneaded Eraser + White Artists' Eraser
8. Artist's tape
9. Paper towels (Viva) + Hand wipes
10. A handheld mirror. This is to check your paintings for proportions and accuracy of value
11. A 5x7 sketchbook (used for notation and thumb-nails) + 3, 9B Pencils + a Sanding Block to sharpen pencils
12. Painter's umbrella for direct-sun painting, when working outdoors.
13. Backpack to carry items
14. **Figure Workshops Only - Carpenter's Plumb and Line** when working from life. This is for establishing a centerline for figures

Setup - See Page 2 Images:

15. Small **folding table**
16. An outdoor easel: I use a "**Take-It Easel**" <https://www.takeiteasel.com>
17. With a **shelf** to act as a holding place for pastels you are using to make your painting

Bring Photo Reference Examples to Work From - See Page 3 Images:

18. Please bring 6 of each of Figure and Landscape references. They must be your own photos, not published.

Set Up and Panel Example



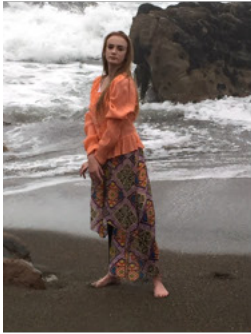


Photo Reference Examples
Please Bring 6 Each,
Figure and Landscape-
Background

